

MACHT HOCH DIE TÜR...

♩ = 138

Ulrich Nehls, 1999

Jazz Waltz

3

p

11

19 8

25 2

32

39 *mf*

46

52

56 0

Alto Sax 1

2

60 open for Solos on Cue 4

70 *p*

77

83 *f*

89 3

97 3

105 3 3 3

111 *D.S.* **CODA** *dim.*

117

120 *pp*

MACHT HOCH DIE TÜR...

Ulrich Nehls, 1999

$\text{♩} = 138$ 3 14 § 21

mf

44 7 3

60 open for Solos on Cue 4 p

71 p

77 8 f

89 3 3

98 3

107 3 3 3 D.S.

115 CODA dim.

119 pp

MACHT HOCH DIE TÜR...

Ulrich Nehls, 1999

$\text{♩} = 138$

3

p

11

19

25

7

37

44

51

56

MACHT HOCH DIE TÜR...

Ulrich Nehls, 1999

♩ = 138

3 14 8 21

mf

43

47

7 7 3

60

open for Solos

on Cue 12

p

76

8

f

89

3

97

3

105

3 3 3

113

CODA

D.S.

dim.

118

pp

MACHT HOCH DIE TÜR...

Ulrich Nehls, 1999

$\text{♩} = 138$ 3 14 ♩ 20

43 3

53

60 open for Solos on Cue 23 *f*

89 3

98 3

107 3

114 *D.S.* \oplus CODA *dim.* 6 *pp*

Trp 2

MACHT HOCH DIE TÜR...

Ulrich Nehls, 1999

$\text{♩} = 138$ **3**

p *mf*

11

19

26

33

40

47

54

60 *C*maj7 *B^b*maj7 on Cue

open for Solos *continue..*

67 Ami7 Cmaj7 F#mi7b9 B9# Emiadd6

75 Emi9 Cmaj7 E/F# G/A G#9# Cmaj7 Bbmaj7

81 Cmaj7 Bb/F# Bbm/B Ab/D D/E G9sus Cmaj7 **3**

End Solo

89 **3**

98 **3**

106 **3**

114 **6**

CODA

dim. *pp*

Trp 3

MACHT HOCH DIE TÜR...

Ulrich Nehls, 1999

$\text{♩} = 138$

3 **14** **20**

42

49 **3**

55

60 open for Solos on Cue **23**

86

89 **3**

98 **3**

106 **5** D.S.

CODA

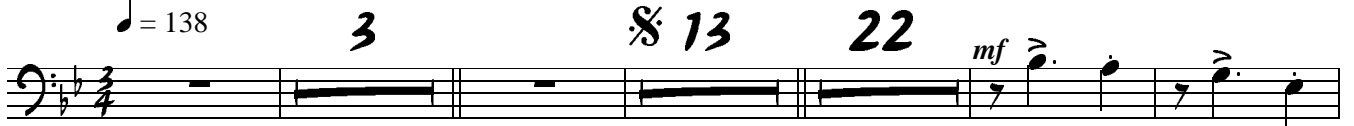
115 **6** dim. pp

MACHT HOCH DIE TÜR...

Ulrich Nehls, 1999

$\text{♩} = 138$


3 13 22 *mf*



43 5

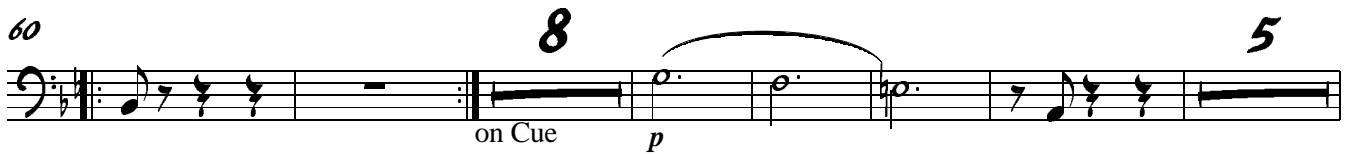


53

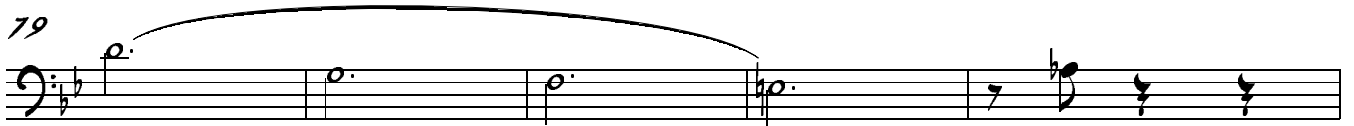


60 8 5

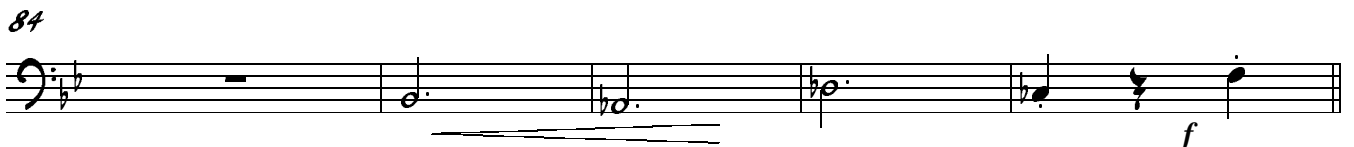
on Cue *p*



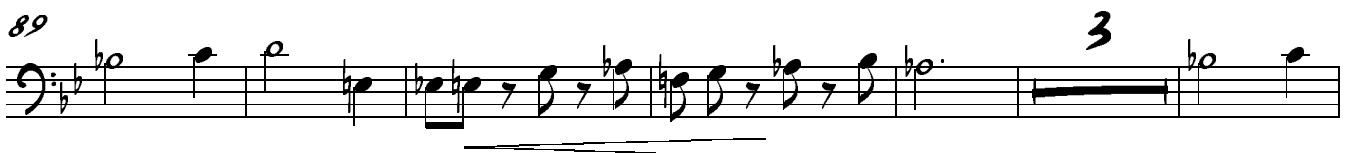
79



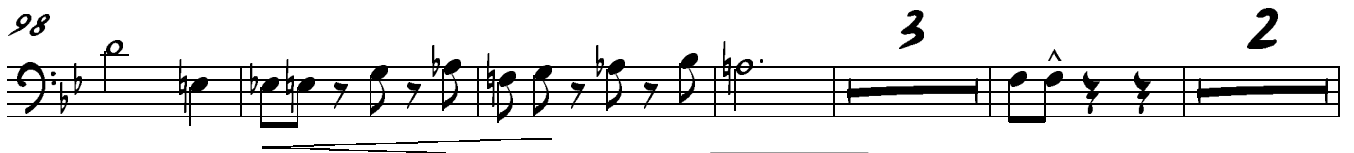
84



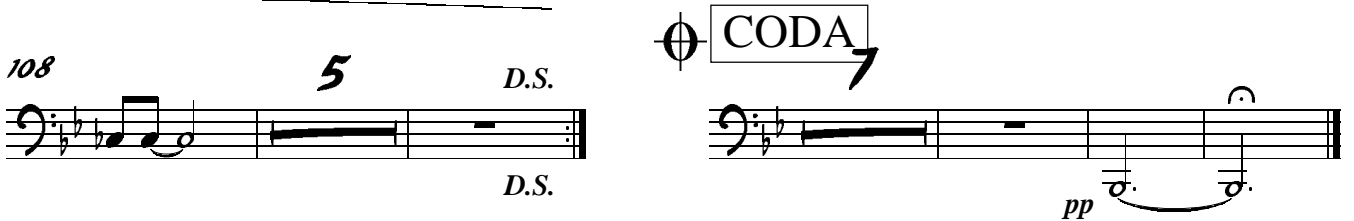
89 3



98 3 2



108 5 D.S. CODA 7 pp



Drums

MACHT HOCH DIE TÜR...

♩ = 138

Ulrich Nehls, 1999

Brushes SOLO

1 2 3 4

5 (time)

5 6 7 8 9 10 11

12

12 13 14 15 16 17 18

19

19 20 21 22 23 24 25 26 27 28

29

29 30

31

31 32 33 34 35 36 37 38 39 40

41

41 42 43 44 45 46 47 48 49 50

50

51 52 53 54 55

56

56 57 58 59 60

fill

61 62 63 64 65

Drums

60 open for Solos on Cue

64

70

79

89 (Tutti) SOLO

f

97 (Ens.) SOLO

105

110 (time) D.S.

115 CODA

dim.

120

pp

MACHT HOCH DIE TÜR...

Ulrich Nehls, 1999

♩ = 138

3

p

12

mf

21

29

37

8

mf

52

mf

60

open for Solos

4

on Cue

mf

67

18

mf

89

25

D.S.

CODA

dim.

D.S.

dim.

118

pp

pp

MACHT HOCH DIE TÜR...

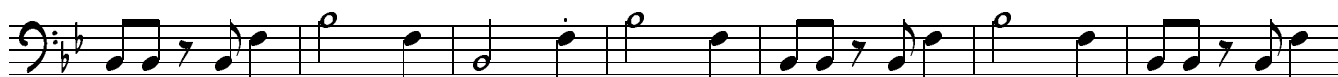
Ulrich Nehls, 1999

$\text{♩} = 138$

3



11

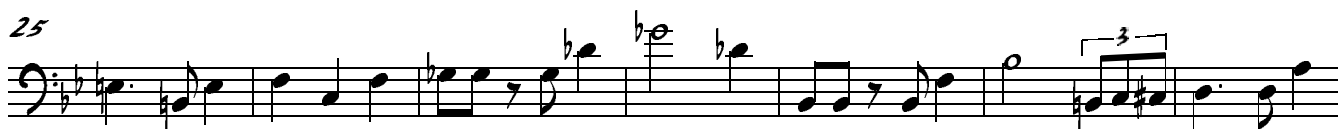


18

§



25



32



39



46



53



60

open for Solos



on Cue

Bass

2 67



74



81




89



107



115  CODA



120



E. Piano

MACHT HOCH DIE TÜR...

Ulrich Nehls, 1999

♩ = 138

Measures 1-9 of the piano score. The piece is in 3/4 time with a key signature of two flats (B-flat and E-flat). Measures 1-3 feature a triplet of eighth notes in the right hand and a triplet of eighth notes in the left hand. Measures 4-6 contain complex chords with triplets. Measure 7 has a dynamic marking of *p*. Measure 8 has a dynamic marking of *f*. Measure 9 ends with a *Ped.* (pedal) marking.

10

Measures 10-16. Measure 10 starts with a triplet of eighth notes in the right hand. Measures 11-16 feature complex chords and a *Ped.* marking at the end.

17

Measures 17-25. Measure 17 starts with a triplet of eighth notes in the right hand. Measure 18 has a *Sc* (scissors) marking. Measures 19-25 feature complex chords and a *Ped.* marking at the end.

26

Measures 26-43. Measures 26-43 feature complex chords and a *Ped.* marking at the end.

44

Measures 44-52. Measures 44-52 feature complex chords and a *Ped.* marking at the end.

53

Measures 53-60. Measures 53-60 feature complex chords and a *Ped.* marking at the end.

E. Piano

2 60

on Cue

18 18 D.S.

115 CODA dim.

121 rit. fill pp